



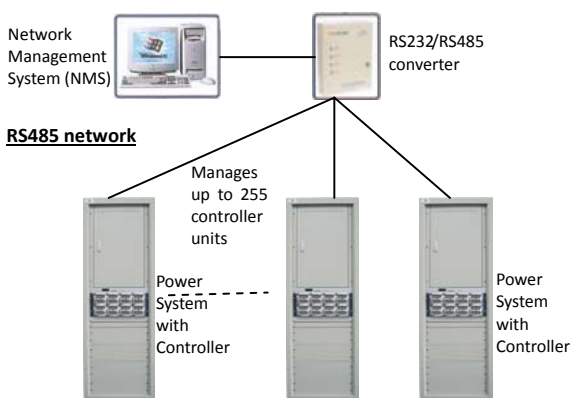
IGCM-01

-48V Intelligent Controller Module



Features

- Multiplex system that comes with analog and digital signals input for environmental monitoring
- Front panel LCD and buttons for on-site service
- Comprehensive intelligent battery management system that aids in extending the battery life
- Allows flexible management of up to 6 groups of dry alarm contacts
- Logs up to 1000 alarms
- Cyclical hibernation to optimize usage
- LED indicators and alarm buzzer
- Communications provided through RS485 and TCP/IP ports
- Wide temperature operating range (-30°C to +55°C)
- Password protected to prevent unauthorized use

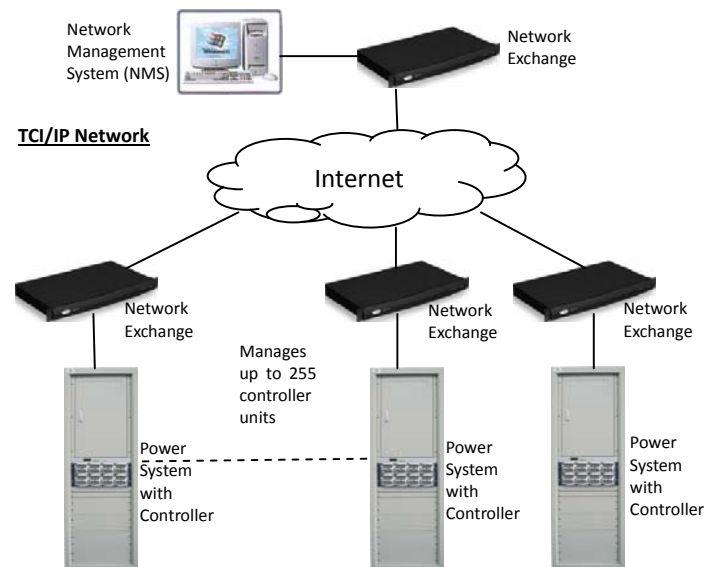


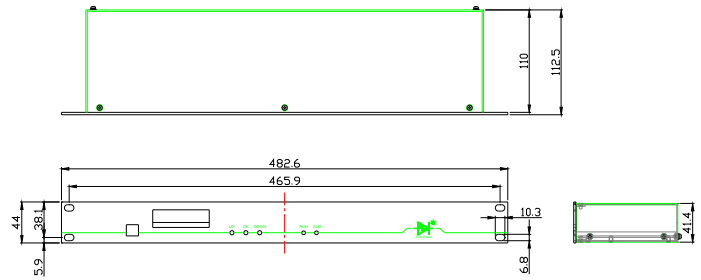
Description

IGCM-01 is a 48V, 1U/19" rack central intelligent control module with extreme capability for real time management of data, report, alarm log & control, battery management, data transmission, load control as well as providing remote monitoring function.

The controller has the capability to remotely startup/shutdown the rectifier module, allowing the users to manage the overall efficiency of the system due to differing needs.

Interface with the IGCM-01 can be via RS485, TCP/IP or local access. The in-built comprehensive battery management system allows automatic management of charge/discharge as well as capacity tests.





Technical Specifications

Overall

Operating Voltage	40 to 60 V DC
Power Consumption	< 10W
EMC	Class A
Safety	IEC60950-1
Marking	CE

Mechanical

Dimension (H×W×D)	41.4 × 482.6 × 112.5 mm
Weight	<= 1.5 kg

Operating Environment

Operating Temperature	-20 to +55°C
Storage Temperature	-40 to +70°C
Relative Humidity	0 to 80%
Altitude	4000m

Input/Output Interface

Analogue Signals Sampling	AC voltage/current, DC output voltage, battery current, load current, module current, battery temp, ambient temp and ambient humidity
Digital Signals Sampling/Output	Rectifier module failure (LOAD1~LOAD12), DC under/over voltage, primary shutdown, secondary shutdown, start up/shutdown of rectifier module (LOAD1~LOAD12), load fuse, fast charge, battery test, battery fuse, status of equalizing/float charge, stand-by sensor (IN1~IN4), stand-by relay (OUT1~OUT6), high load current, high battery current, AC MCB disconnected, AC under/over voltage, AC loss

Alarms

History Alarm Logs	1000
Available Alarms	AC under/over voltage alarm, AC power down alarm, rectifier module failure, fan failure, DC under/over voltage, battery shutdown, rectifier module start up/shutdown, load/battery fuse blown, SPD failure, door control, smog, water logging alarm

Main Features

Float charge management	Normal, quick & schedule battery test
Battery management and maintenance	Loads management and protection
Modules management	Modules power saving algorithm
Temperature compensated charging	Programmable alarms logic
User password management	Programmable alarms name with different levels
Configuration up/download	Hot plug without affecting overall system operation

LCD/Interface

Display	2 lines * 16 characters
Interface	RS232, RS485, TCP/IP